



LAKEWOOD
ON THE PARK
BUILDING B&C



Address: 7600 North Capital of Texas Highway
Austin, TX 78731

Building Size: Bldg B - 102,056 SF
Bldg C - 78,502 SF

Parking: 4.0 / 1,000 Structured & Surface

Class: A

Submarket: Northwest



AMENITIES

- + Newly Renovated Common Areas
- + Fresh Grab and Go Deli
- + Tenant Lounge with Wi-Fi and Kitchen
- + On-site Fitness Center with Showers and Lockers
- + Structured Parking with Direct Building Access
- + Conference Room, Free for Tenant Use
- + Basketball and Volleyball Courts
- + Direct Access to Bull Creek Greenbelt Trail
- + Campus Style Setting with Hill Country Views
- + On-site Management
- + Card Key Entry After Hours
- + Convenient ingress/egress off North Capital of Texas Highway


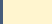





LOCATION FEATURES

- + Excellent access to major highways - US-183, MoPac Expressway and Loop 360
- + Five minutes to Siena, Waterloo Ice House and County Line BBQ
- + Six minutes to Davenport Village with Jack Allen's, Maudie's and Thai Spice
- + Seven minutes to the Arboretum
- + Twelve minutes to The Domain



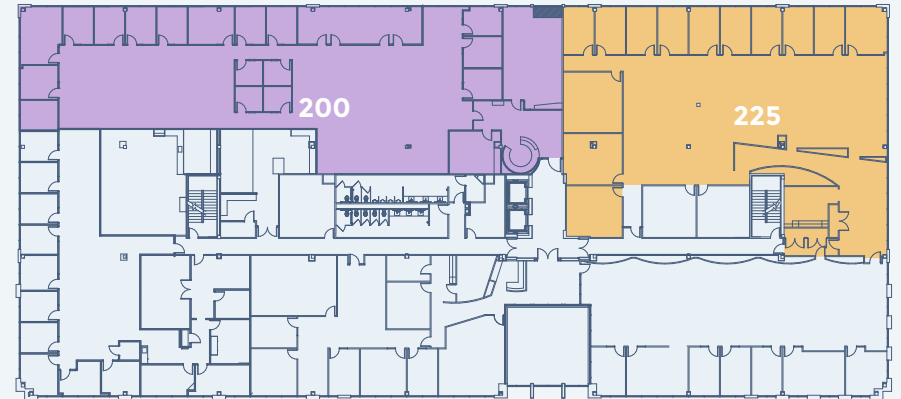
AVAILABILITIES - BUILDING B

	Suite 100	3,285 SF	Divisible
	Suite 115	1,761 SF	
	Suite 200	11,365 SF	
	Suite 225	7,908 SF	
	Suite 340	3,719 SF	

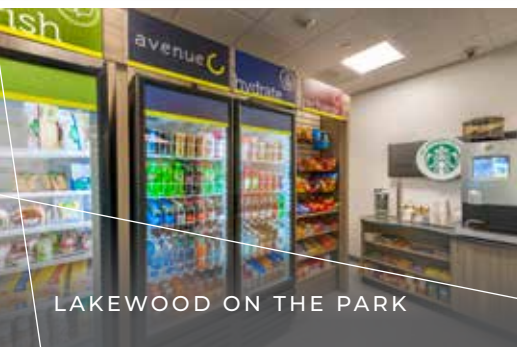
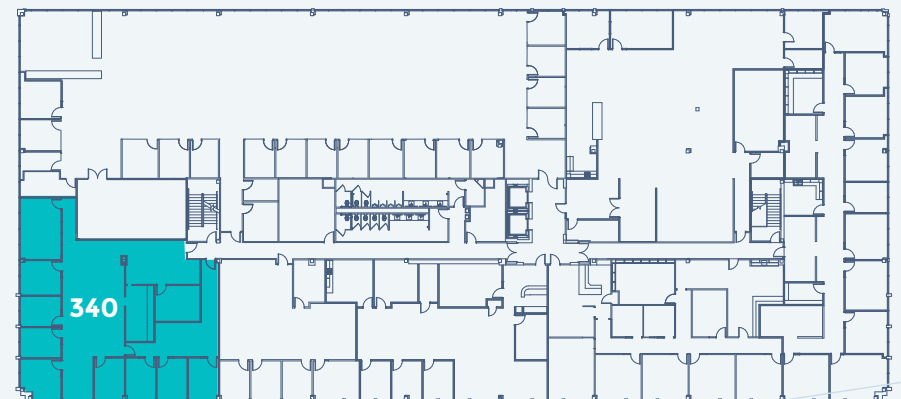
FLOOR 1



FLOOR 2



FLOOR 3



FLOOR 1



AVAILABILITIES - BUILDING C

■ Suite 110

1,765 SF





Bull Creek
Green Belt Entrance



ROBERT PAINE
Leasing
512-563-8511

LAKWOOD
ON THE PARK
BUILDING B & C